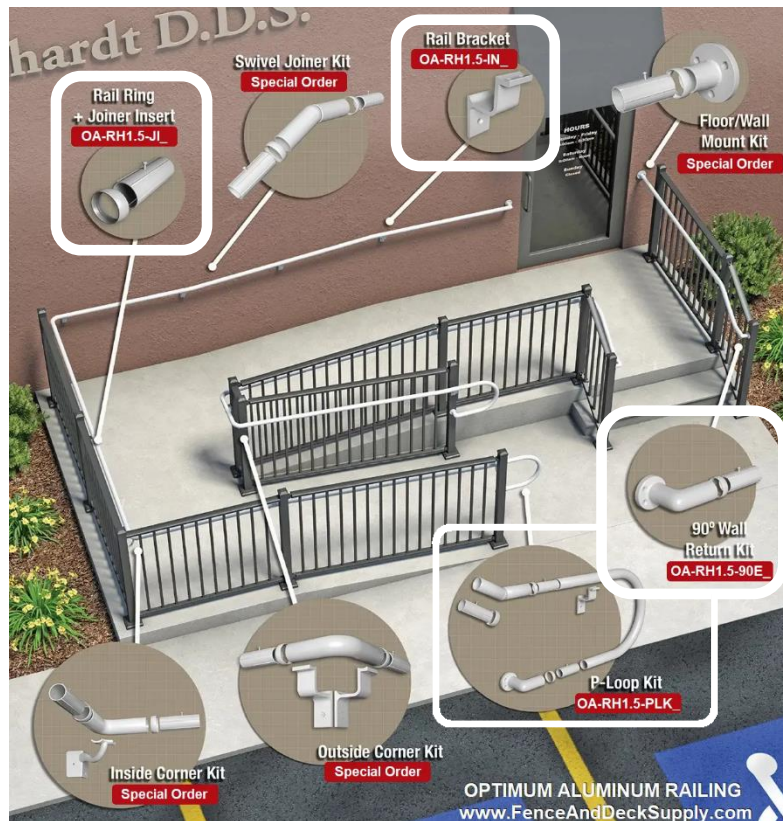


OPTIMUM
ALUMINUM RAILING by **FDS**

SECONDARY HANDRAIL INSTALLATION

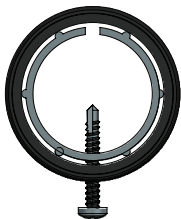


RHG15-JIRKIT-

1.5" Secondary Rail Ring and Joiner Insert w/Screws

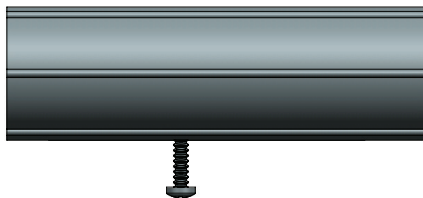
INSTALLATION

front view



#8 x 1" Phillips Head TEK
Screw hold Joiner from
sliding inside pipe.

side view



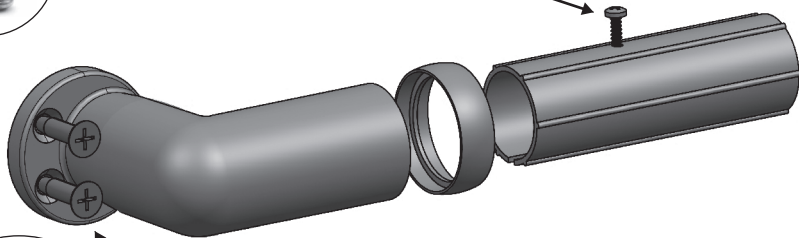
top view



RHG15-90KIT- 1.5" Secondary Rail 90° Elbow with Joiner Kit INSTALLATION



#8 x 1" Phillips Head TEK Screw hold
Joiner from sliding inside pipe.



Pre-drill holes with a 13/64" drill bit
and put Type F screw in ADA post.

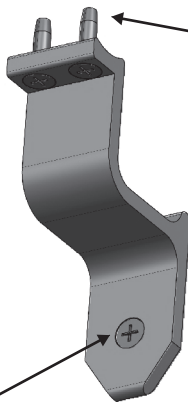


*Screw head -
#3 Phillips*

RHG15-ILBKIT-

1.5" Secondary Rail Bracket Kit

INSTALLATION



Pre-drill holes with a 13/64" drill bit and put Type F screw in rail.



Screw head - #3 Phillips

Pre-drill a hole with a 13/64" drill bit and put Type F screw in ADA post.



UARA-10493-PLKKIT- 1.5" Secondary Rail P-Loop Kit INSTALLATION

