

How To Guide:

Freestanding Wood Pergola



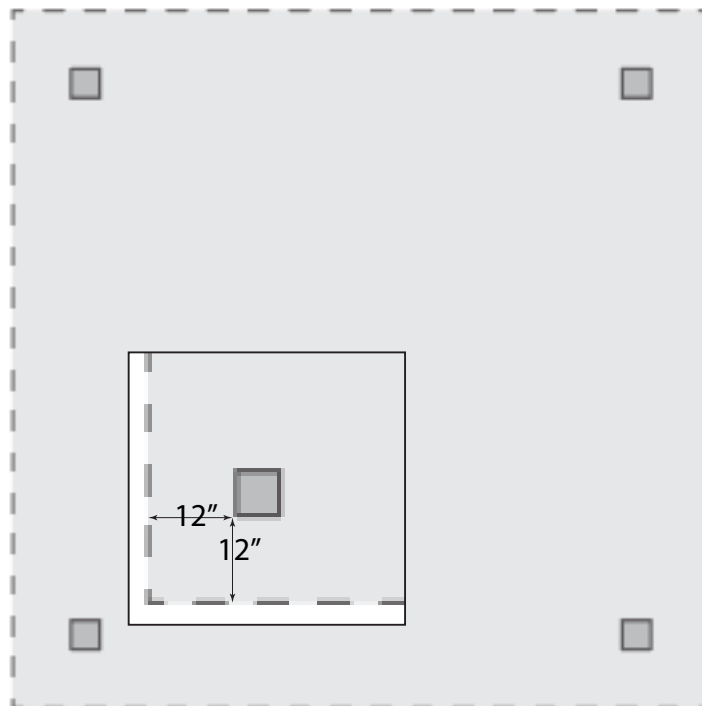
 **Fence & Deck Supply**

How To Guide:

Freestanding Wood Pergola

Step 1: Post Bases

1. Layout the footprint of your pergola.
2. At each corner, measure in 12" in each direction to mark the position of the post bases.
3. Pour concrete footings for the post bases to meet local codes. The footing should be at least 2 ft x 2 ft and deep enough to be below the frost line for your area.
4. Allow time for the concrete to cure.



How To Guide:

Freestanding Wood Pergola

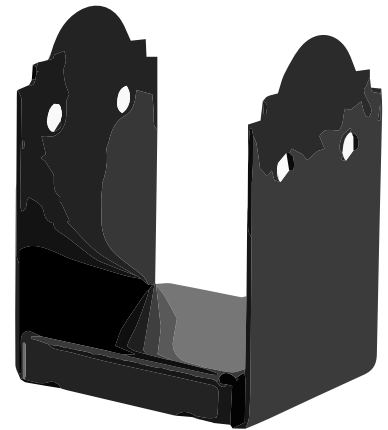
5. Install anchor per design.

6. Position base stirrup over anchor and adjust to correct alignment. Install bearing plate and nut.



7. Install standoff base.

8. Position post in base assembly and install Structural Wood Screws through the Hex-Head Washers into connector holes.



9. Repeat for all posts.

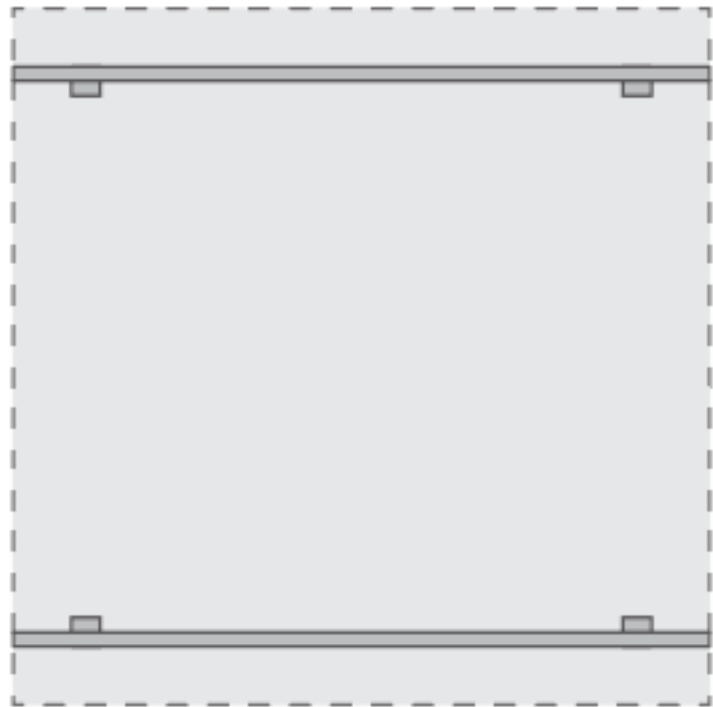


How To Guide:

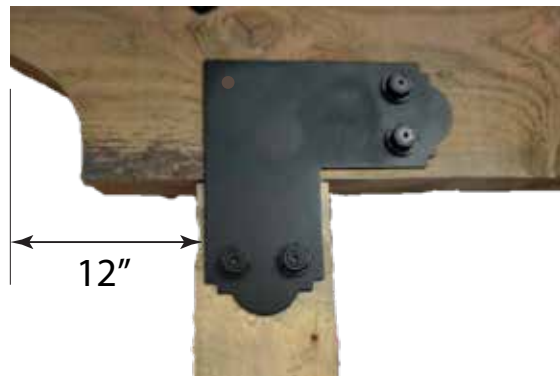
Freestanding Wood Pergola

Step 2: Beams

1. Before lifting the beams into place, install the L-Plates at the top of the posts using two structural wood screws and hex head nuts. These will provide support for your beams when you lift them into place.



2. Lift the beams into place and secure with two structural wood screws. The fifth hole will be used to secure the beam to the cross beam.

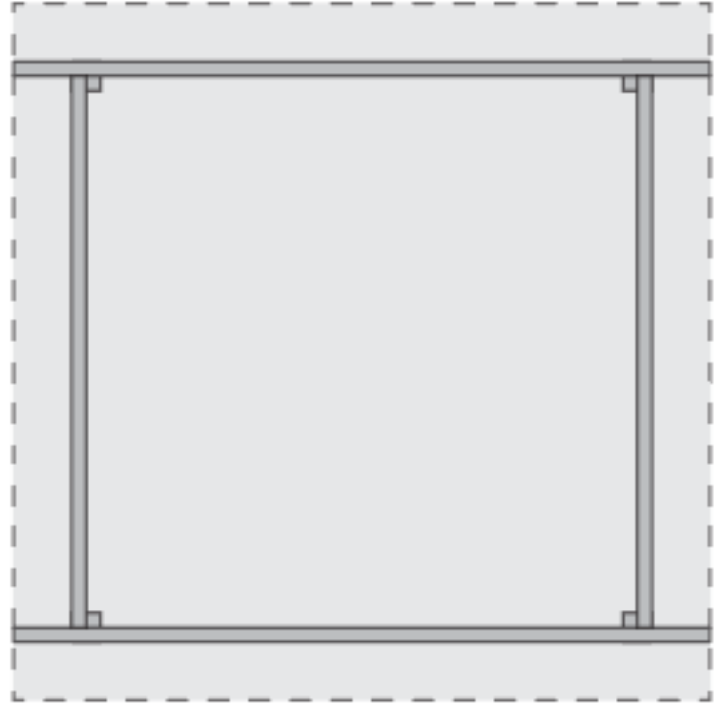


How To Guide:

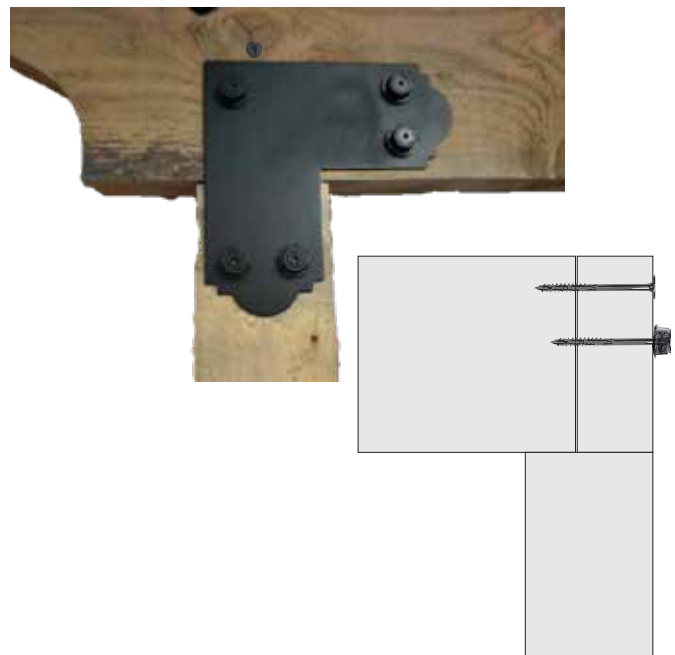
Freestanding Wood Pergola

Step 3: Cross Beams

1. Measure the distance between the front and rear beam and cut the cross beams to fit.



2. Lift the beams into place and secure with two long structural wood screws (one through the fifth hole in the L plate using a hex head nut and the other above the L plate without a nut).

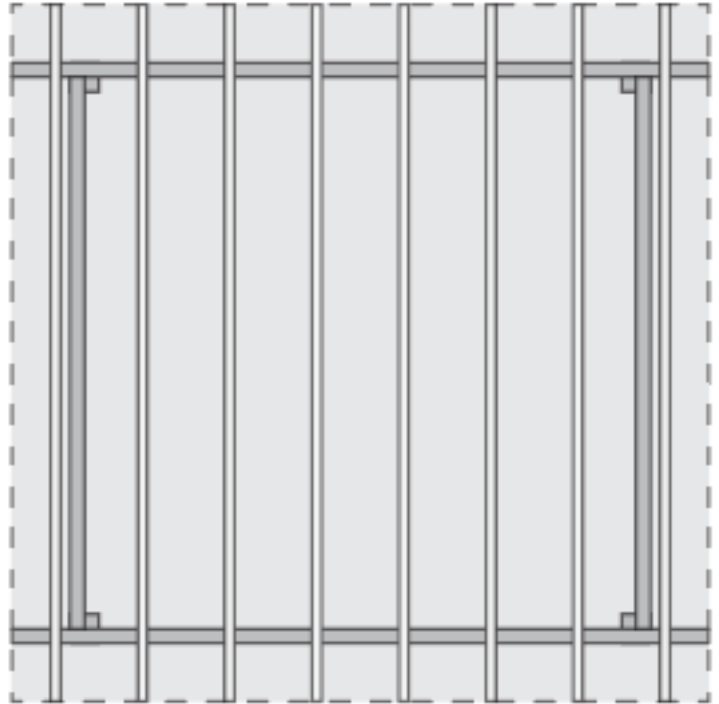


How To Guide:

Freestanding Wood Pergola

Step 4: Rafters

1. Begin by finding the center of your beam. If you have an odd number of rafters make a mark at the center. If you have an even number of rafters, measure over 9 inches and make a mark.
2. Make a mark every 18" in both directions from your mark, one for each rafter.
3. Lift your rafters into place, one on each mark. You should have a 12" overhang in each direction.
4. Secure the rafters to the beam with the rafter clips and structural screws.



Standard Kit



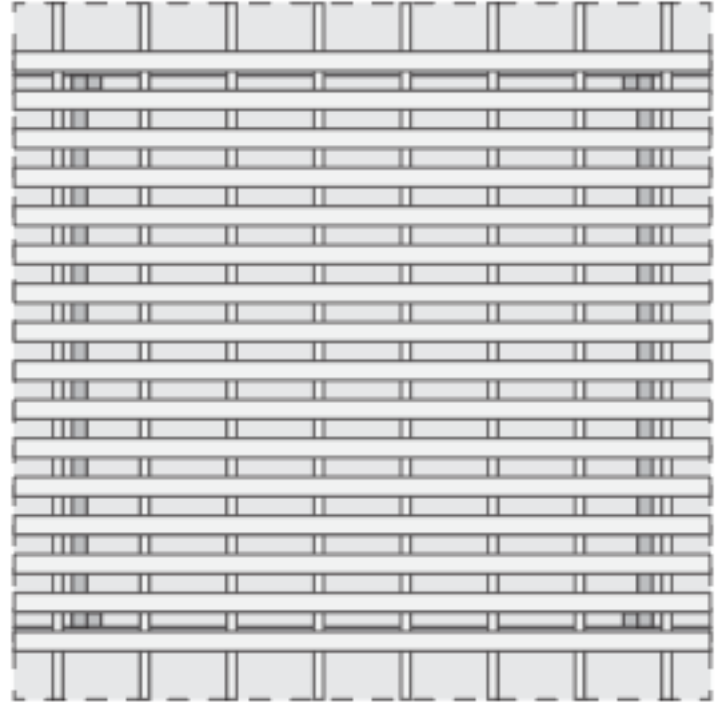
Super Size Kit

How To Guide:

Freestanding Wood Pergola

Step 5: Shade Planks

1. Begin by finding the center of your rafters. If you have an odd number of shade planks make a mark at the center. If you have an even number of shade planks, measure over 4 inches and make a mark.
2. Make a mark every 8" in both directions from your mark, one for each shade plank.
3. Lift your shade planks into place, one on each mark. Make sure the overhang is equal on both sides.
4. Secure the shade planks to the rafters with the provided screws, screwing them down from the top, one screw at each intersection.



How To Guide:

Freestanding Wood Pergola

Step 6: Knee Braces

1. Using the longer structural wood screws, attach the kneebraces to the posts and beams. The hex head washers are not used on the kneebraces.

