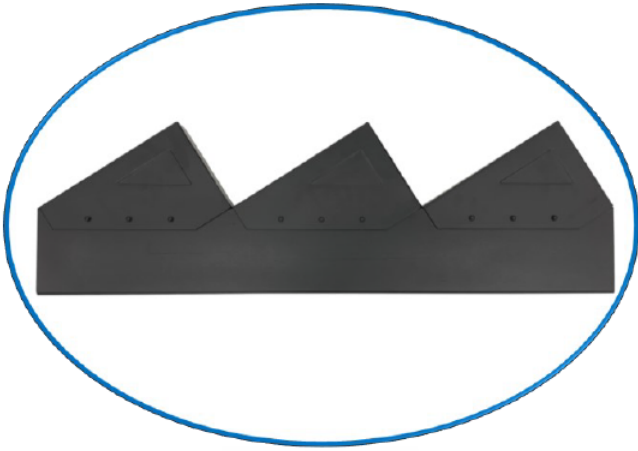


# Installing the Fixed Rise Run Stair Brackets

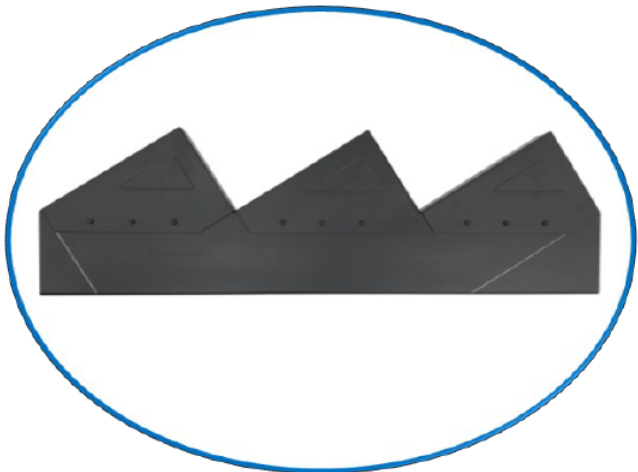
The fixed Rise Run brackets are non - adjustable, and are to be used for stair rise / run of either 7"/11" or 7.75"/11".



Install the brackets on either an Evolution 2"x6" Joist or 2" x11" Beam.

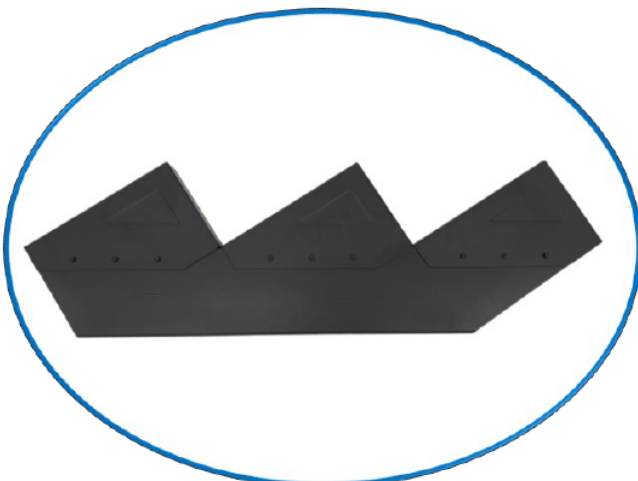
Butt the brackets together; they should be touching when they're fastened.

Fasten the brackets to the joists using the Evolution 3/4" Self-Drilling Screw.



Once all the brackets are installed use a silver permanent marker to mark the angles.

The angle does not have to be measured. Use a straight edge to continue angles on either side of the bracket.



Use a metal cutting saw and blade to make the marked cuts.

Install the assembled stringers using the Evolution Stair Strap and Evolution Anchor Bracket.

# Stair Strap



Position the stair strap and fasten to the deck using the Evolution 3/4" Self-Drilling Screws

Install the Stringer by positioning it on the stair strap and fastening it using the holes on the side of the bracket and Evolution 3/4" Self-Drilling Screw (Not Pictured).



Once the Stringer is installed, use a rubber mallet to bend the bottom portion of the stair strap along the bottom side of the stringer.

Fill in all the holes on the bracket with the Evolution 3/4" Self-Drilling Screw.



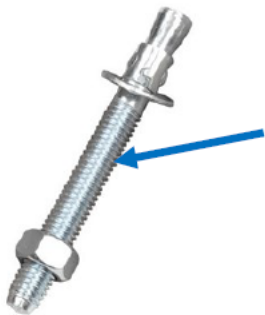
Stair Strap fully installed.

# Anchor Bracket

The Evolution Anchor Bracket attaches the stringer to the concrete footing pad or the deck landing (typical installation).



Attached the anchor bracket to the bottom of the stringer using the Evolution 3/4" Self-Drilling Screws.



Use a 3/8" concrete wedge anchor to securely fasten the anchor bracket to the concrete.



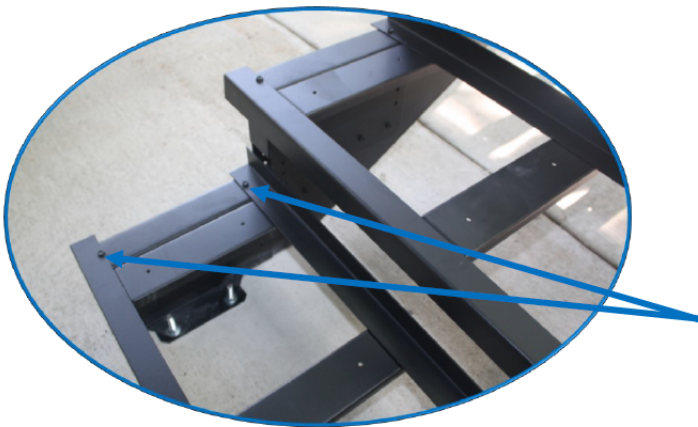
If anchoring to a landing, install blocking and attach the anchor bracket thru the blocking using 3/8" bolts, nuts, and washers.

# Stair Tray

The stair trays are 48" wide with blocking spaced every 10" On-Center. The tray can span 48" between stringers in residential applications.

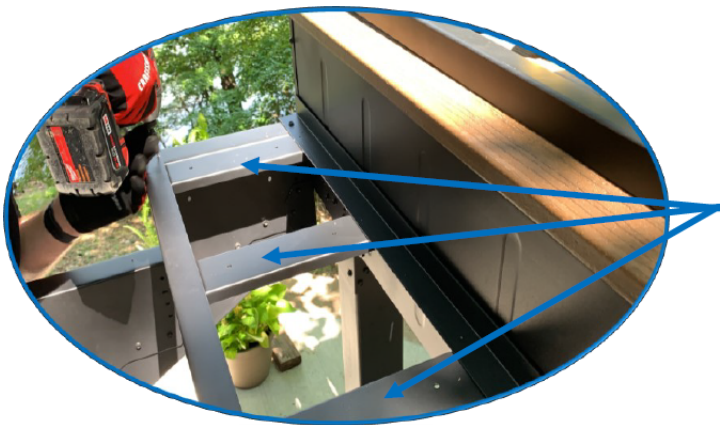


Stringers full assembled and anchored to the deck with the Evolution Stair Strap and anchored to the concrete with the Evolution Anchor Bracket.



Once the stringers are attached lay the Stair Tray on top of the stair brackets and center it.

Fasten the tray using (2) Evolution 3/4" Self Drilling Screws at each stringer.



The blocking every 10" On-Center can be used for railing post attachment and stair tread attachment.